


Civilian/Military Drone

eVTOL- WOSHARK



	翼展 Wingspan	2100mm
	长度 Length	1065mm
	起降方式 Takeoff and landing mode	垂直起降 Vertical takeoff and landing
	最大起飞重量 Maximum takeoff weight	10kg
	最大有效载荷 Maximum payload	2kg
	最大海拔高度 Ceiling Altitude	5000m above sea-level
	最大电池续航时间 Maximum battery life	2h

	巡航速度 Cruising speed	90km/h
	最大水平飞行速度 Maximum level flight speed	108km/h
	最小水平飞行速度 Minimum level flight speed	72km/h
	最大抗风能力 Max Wind Resistance	7
	抗雨能力 Rain Fall Resistance	小雨 light rain
	工作温度 Operation temperature	-20°C—50°C
	有效载荷 Payloads	RGB, 3D, 多光谱Multispectral, 视频video, 红外Infrared

WOSHARK



Automation Flight System-C60



Redefining Industrial Drones: The Future Extends Far Beyond!

1. Industry's pioneering **semi-fixed-flight adaptive** control system, indepently developed for **more stable** flights.
2. Efficient integration of a **winged-arm quadrotor structure design** — Extending even **further ranges**.
3. Industry's first seamlessly **embedded** whole-machine **parachute** — an extra layer of **security and peace of mind**.
4. A fully self-developed power system at **12g/w** — **reducing energy consumption** for enhanced efficiency.

55 min
Maximum no-load
flight time

40 min
maximum hover time
with payload (tri-light
mount version)

4800g
maximum takeoff
weight

3236g empty
weight (including
parachute)

-10°C to 45°C
operating
temperature

27m/s maximum
horizontal flight
speed

IP45 protection
level

Built-in AI brain

six-directional
obstacle avoidance

Built-in with
intelligent
parachute

Full-color night
vision camera

interchangeable
mounts

M710 Docking Station



Swift Data Download



120s Battery Swap



Integrated Design



Side-Opening



Uninterrupted Operation



IP55 Protection







**MORE EFFORTS.
MORE POSSIBILITIES**

INNOFLIGHT AUTOMATIC FLIGHT SYSTEM

UAV Management Platform with AI

UAV AI Automatic Identification
of Illegal Parking of Vehicles
The whole process of work



Planning illegal parking
areas for vehicles

UAV Port inspection tour



Closed fishing season
Real-time monitoring of vessel numbers

MILYARY DRONE

Patrol and Attack/Material Transportation/Emergency Lighting

Patrol and Attack Self-destruct drone

portable **Easy**

Patrol

Self-destructible



CAS-H02 coaxial propeller

Body size	110mm*110mm*500mm
Unfolding size	750mm*750mm*500mm
Body weight	3kg
Payload weight	2kg (photoelectric pod + battery + cargo bay)
Flight mode	VTOL
Operating ambient temperature	-20°C to 60°C
Operating ambient temperature	1min
Battery capacity	24V/10000mAh
Flight radius	8KM
Flight function	Forward fly, reverse fly, spot hover, etc
Max flying speed	15m/s
Highest altitude	4000m
Load 1.5kg endurance	15min 16000mAh battery + photoelectric pod +AI module

Individual Drop Mortar Drone

portable

Easy drop

Short

distance

Foldable

Strong mobility



DL-125

Unfolding size	680*680*150mm
Folding size	455*280*100mm
Max take-off weight	6kg
Mounted type	30mm grenade/ 60mm mortar
Maximum load	1.5kg
Max flying speed	80KM/h
Endurance	30min/with payload16min
Control radius	5KM
Attack accuracy	0.5m
Communication	1.2G/1.4G/2.4G/5.8G (Meet task setting requirements)

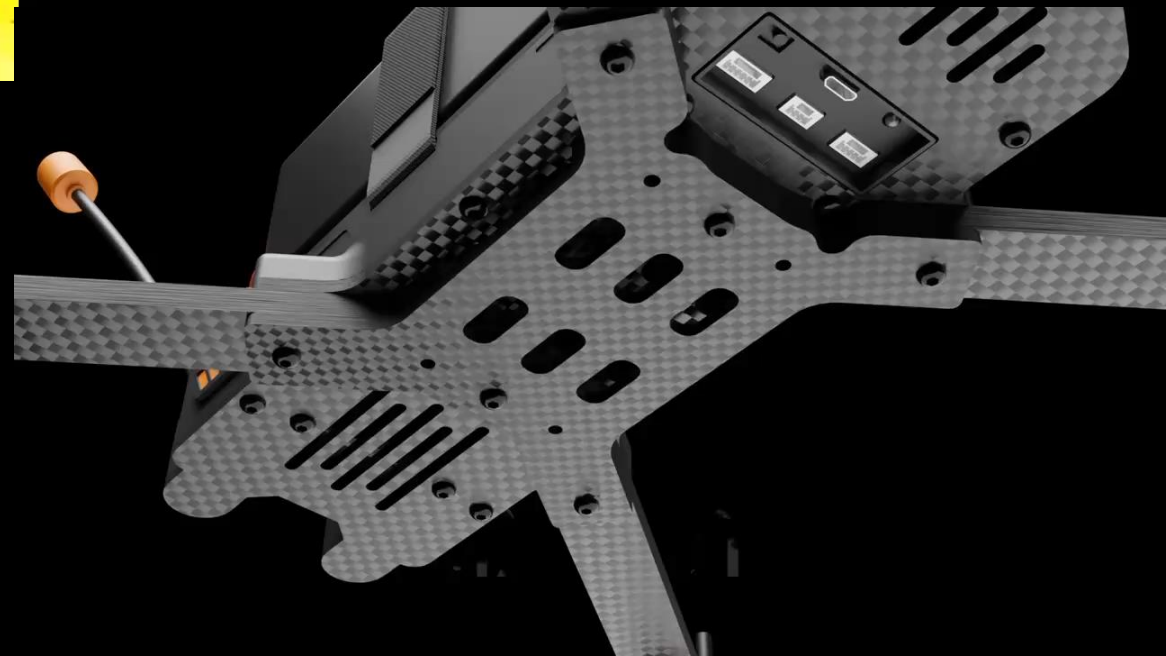
Kamikaze AI FPV drone with dual camera



X-10T



Installation blade size:	578.5*528.7*80.5mm
Maximum load	3kg
Max flying speed	30m/s
Endurance	50min with no payload
Max transmission control distance	20km
Communication	1.2G/1.4G/2.4G/5.8G (Meet task setting requirements)
Visible light camera	Lens pixel: 500w Lens focal length: f-3.5~4.75mm Aperture: vertical 2.0 HFOV/VFOW/DFOV: 100'/52°/122° Image resolution: 1280*720 Photo/video resolution: 2560*1440 Zoom: : 30x electronic zoom
Thermal imaging camera	Resolution: 384*288 Frame rate: ≤25Hz Heat time constant speed: <10ms Focal length: 7mm Aperture: F1.0 FOV: 24.8°*18.7 Pixel spacing: 12um Spectral range: 8~14um



Kamikaze AI FPV drone



ZD-10

Blade: 1050 10Inch 3-blade Pc*4

Frame: 10-inch V2 or DR10 (Foldable style)

Motor: 3110 900KV*4

Load: 3KG

No-load Endurance: 20 minutes

Strike speed: 15m/s

Head Angle: -40°~90°

AI module computing power: 6TopS

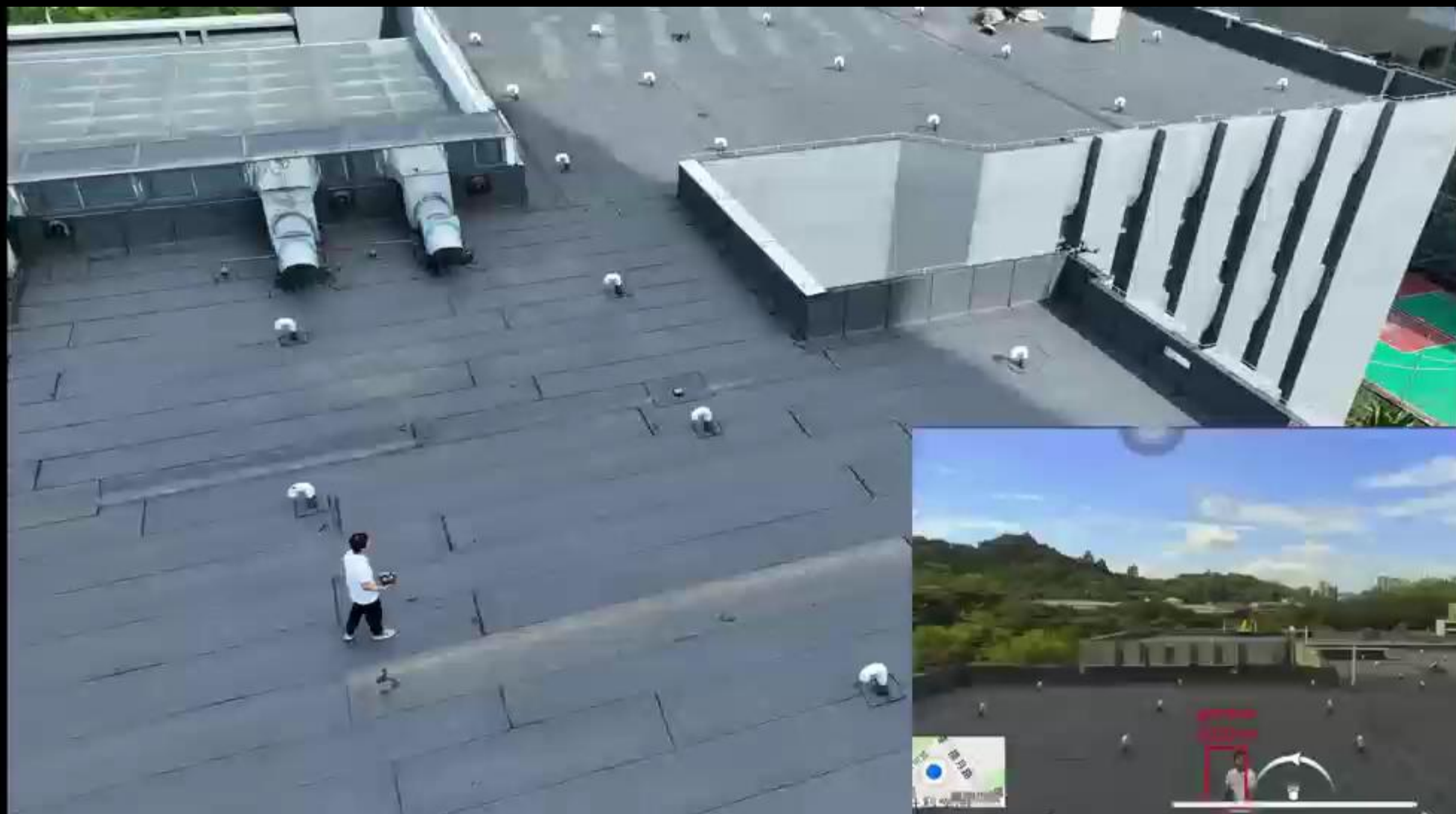
Image sensor: 1/2.8 inch sensor

Image transmission resolution: 1920*1080 60FPS

Image output format: optional (analog/digital)

Image data transmission: Optional (digital/analog optional)

Strike mode: Optional (GPS strike/no GPS strike)





Tube-Launching Foldable drone

PD1800

Folding size :1223*200*200mm

Expansion size :1223*1820*340mm

Empty weight :3.5kG

Total length :0.85m

Flight speed :120-150km/h

Endurance :1-2h

Practical ceiling :5000m

Maximum take-off weight :20kg

Payload :5kg

Wind resistance: Level 7

Maximum range :200-300KM

control range:200KM

Package includes :1. Foldable drone platform2. Batteries and chargers3. Remote Control4. Ground control system5. Launch system6. High-pressure gas tanks7. Secondary development technology costs8. Fuselage shell design costs9. Personnel cost10. battery





Drone Detection System



S-10

Display screen 1.5 inches
Size (excluding antenna)

63*42.7*103 mm

Battery 3000 mAh/hour

Antenna 300M-6GHz

Charging port Type-C

Power consumption 0.8W

Weight 183g

Battery life about 15 hours

Operating temperature -10°C-55°C

Individual Drop Mortar Drone

DL-130

portable
Easy drop
Strong mobility



Wheelbase size	1300mm
Storage size	350*500*500mm
Endurance	60min (no load) /35min (12kg load)
Payload aperture	60mm/80mm (optional) (6 mortars)
Machine weight	about20kg
Maxload capacity	18kg
Max take-off weight	40kg
Control distance	10km
Max speed	20m/s
Camera	Standard triaxial visible light (optional triaxial double/triple light)
Throwing mode	Single sequential throw/all key throw
Load transfer time	30 seconds

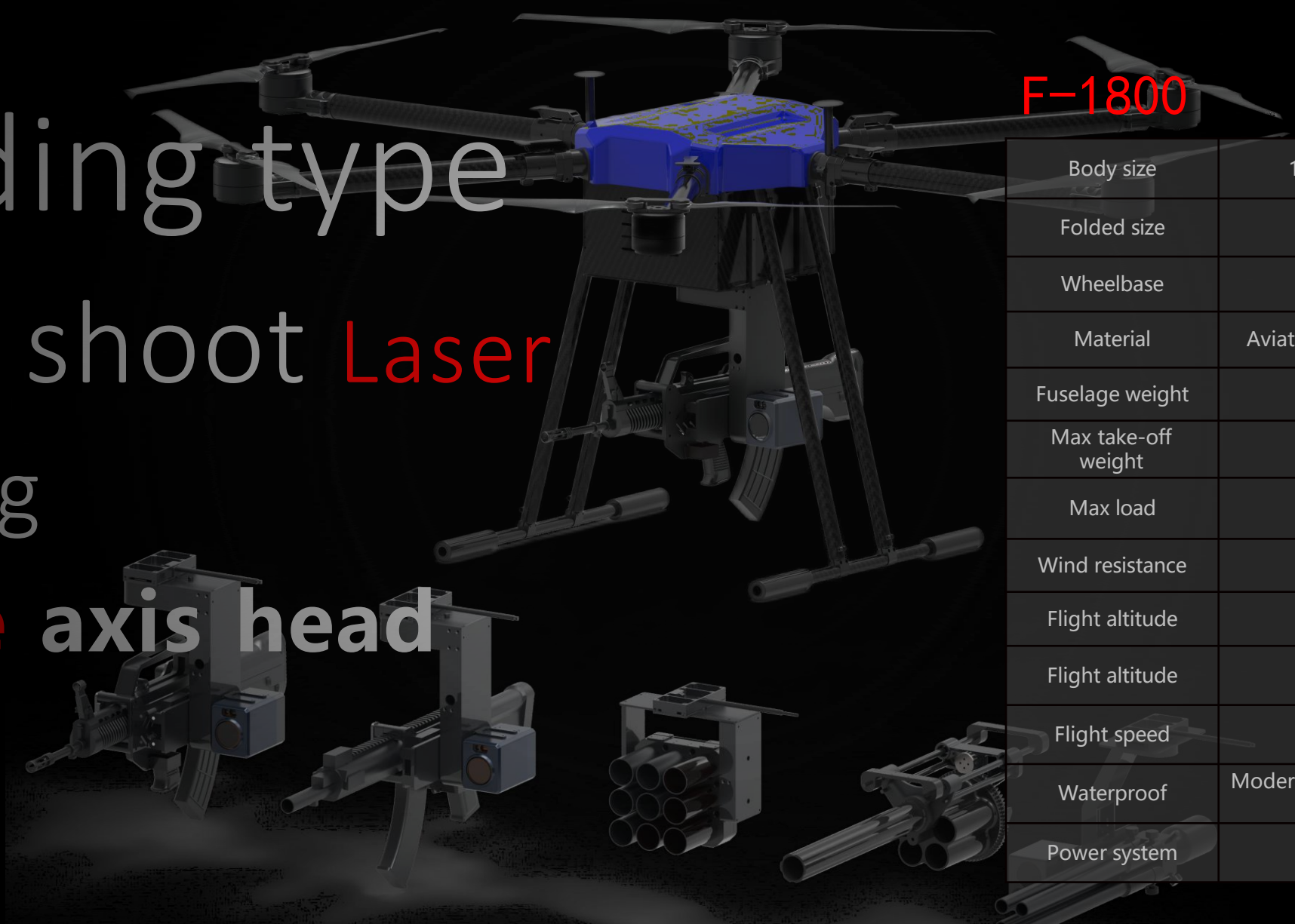
Gun Mounted Multi-purpose Drone

Folding type

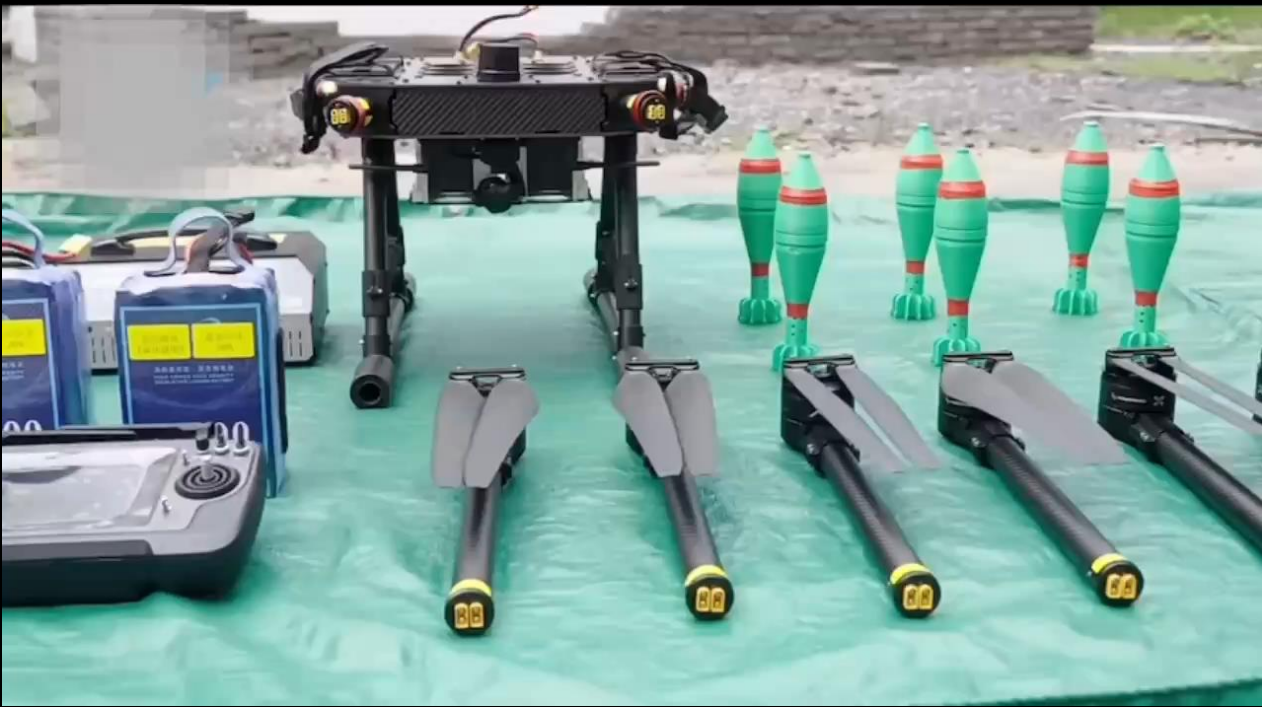
Easy shoot Laser aiming

Three axis head

F-1800



Body size	1800mm x1800mm x800mm
Folded size	800 mm x800 mm x800mm
Wheelbase	1800mm
Material	Aviation aluminum alloy, carbon fiber
Fuselage weight	16KG
Max take-off weight	50kg (near sea level)
Max load	20kg
Wind resistance	Force 7 wind
Flight altitude	5000m
Flight altitude	20m/s (no wind)
Flight speed	30-70 minutes
Waterproof	Moderate rain body can be washed with water
Power system	54000mah



Heavy Payload UAV (30-100 kg)

- **Heavy** load Transportation



M100

Empty weight 90kg

Wheelbase 2810mm

Standard load 80kg, recommended less than 100kg

Maximum load 100kg

Hovering accuracy horizontal $< \pm 1\text{m}$, vertical $< \pm 0.5\text{m}$

Maximum flight time 60 minutes of empty hovering,

25 minutes of hovering with 80kg load

Maximum climbing speed 6m/s

Maximum landing speed 3m/s

Maximum flight radius 15 km

Maximum relative flight altitude 1500 m

Maximum flight altitude 3000 m

Maximum horizontal flight speed 75km/h

Economic cruising speed 35km/h

Navigation system GNSS+INS

High-precision navigation system RTK high-precision positioning and orientation, error range $\leq 20\text{cm}$

Communication & control frequency 1.4GHz

Radio communication range high-gain antenna, $\leq 8-10$ km

Wind resistance 7 Grade



Heavy Payload UAV (200kg)

F400

- Heavy load Transportation
- Day and night tracking



Dimension	Unfolding: 3200*3200*750
Payload	Standard: 100kg Max. : 200kg
Takeoff weight	Max. : 270kg
Positioning system	GPS(Upgradeable RTK)
Endurance	≤60min (no load)
Power battery	High energy density intelligence
Speed	Flight speed: ≤20m/s Rising speed: 5m/s
Graph transmission distance	5-10 km (upgradable)
Wind resistance rating	Grade 7
Max flying altitude	5000m
Camera	Dual-axis PTZ camera (Upgradable pod)
Early warning mode	Automatic hover, autonomous return, direct landing



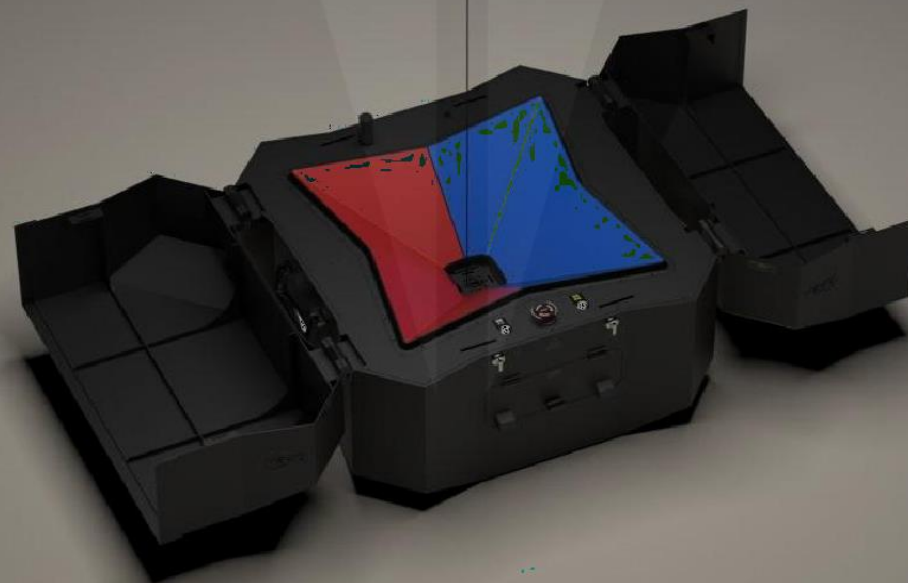
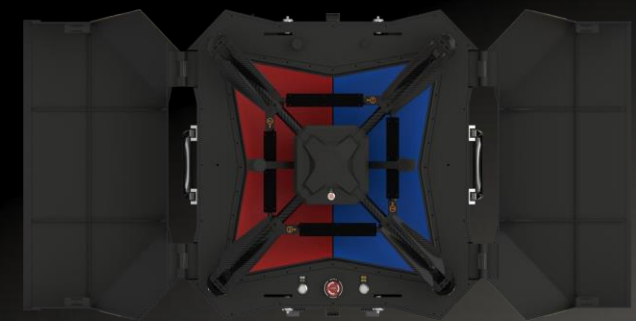


Falcon-15

- Wing span:4080mm
- Length:1250mm
- Standard mounting weight:8KG
- Maximum takeoff weight: 38KG
- Standard mount flight duration: 180min
- Maximum cruise speed: 30M/S
- Maximum wind resistance: 5 Level
- Ambient Temperature: -10°~40
- Waterproofgrade: IP4
- HD video transmission link
- 30km HD image transmission link (up to 300km optional)
- Using dual optical cameras (EO/IR) and HD image transmission, real-time search and identification, locking and tracking, positioning and evidence collection of ground/surface/air targets



Tethered Lighting Drone



X58

Rated input voltage	200~240VAC
Overall machine size	605*577*518mm
Lighting power	720W
Illuminance	108000Lm
Total power	4KW
Max flight altitude	30m
Takeoff weight	3.8Kg
Aircraft backup battery life	4 minutes on full charge; 60% charge for 3 minutes
Max light illumination area	6500m ²
Total weight(Kg)	26.8kg
Waterproof and isopolar	IPX3
Effectively control distance	1km
Continuous working hours	More than 8hours

THANK YOU